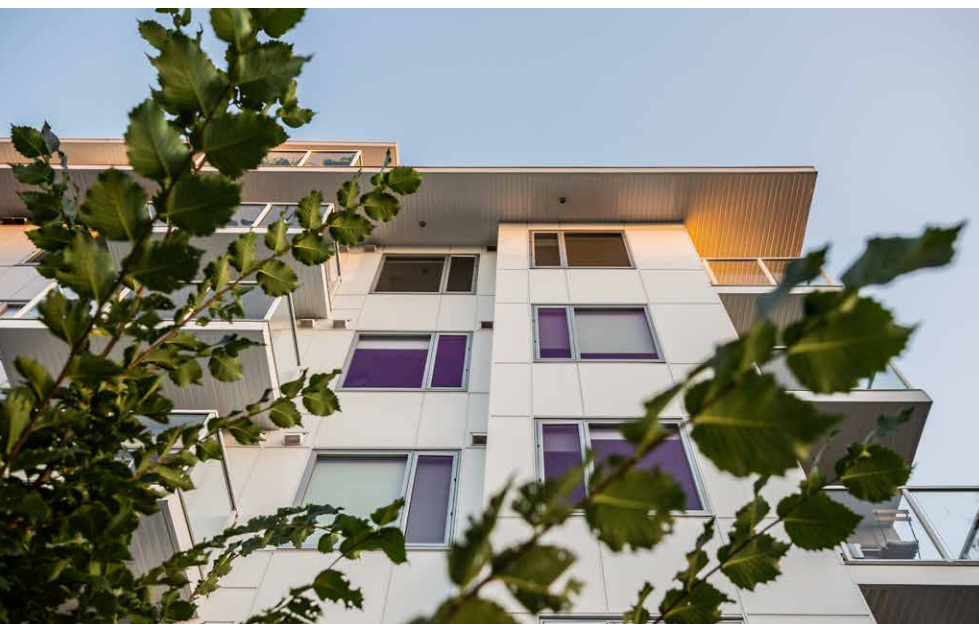


# THE EASY CHOICE

Bold Design. Superior Functionality.



EasyTrim Reveals® is a complete two-piece, exterior aluminum trim system compatible with the most popular lap, siding and panel options on the market. EasyTrim Reveals® is the go-to for both residential and commercial projects across North America.

- ➔ UV / Fade Resistant
- ➔ Full-Edge Protection
- ➔ Anti-Corrosive

- ➔ Maintenance Free
- ➔ Moisture Management
- ➔ No-Sharp Edges





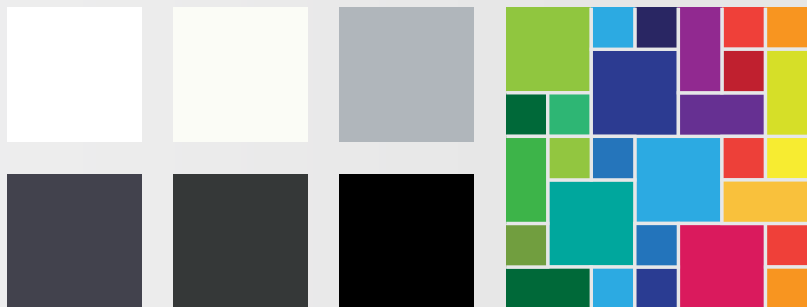
## The Easiest Choice to Make

More than just a trim solution, EasyTrim Reveals® significantly reduces installation time and enhances the building's exterior performance, minimizing the need for ongoing maintenance. Our Fit and Finish™ system features overlapping trims that protect siding from moisture and harsh elements. This design not only preserves the aesthetics but also extends the life of your building exterior, making EasyTrim Reveals® the smart choice for long-lasting quality.



## Multiple Colors and Finishes to Choose from

Full selection of color options available on our website.



Visit our website to engage with a representative or to find out more about our two-piece trim system:



+1 877 973 8746  
info@engagebp.com  
[engagebp.com/easytrim](https://engagebp.com/easytrim)

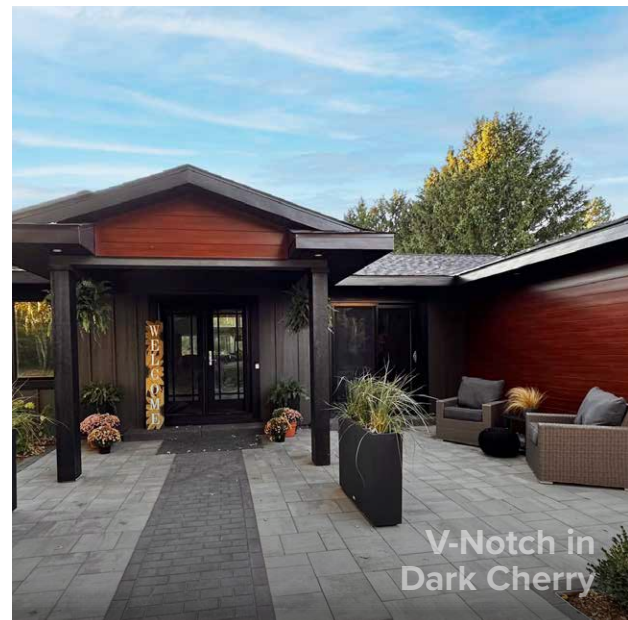
**ENGAGE**  
BUILDING PRODUCTS™

Powder Perfect  
Exteriors



# STRIKING ACCENTS

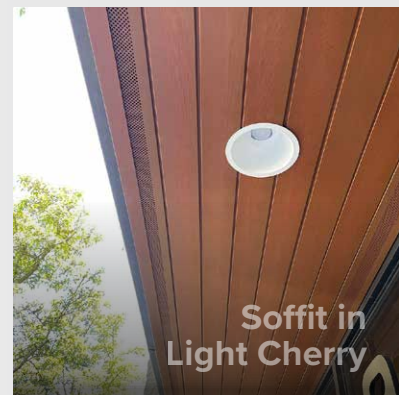
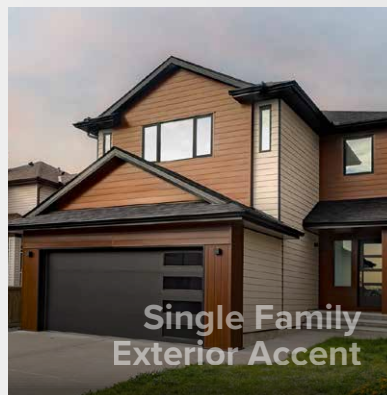
Seamless Soffits. Endless Possibilities.



FastPlank® Systems is a versatile aluminum plank siding solution designed to reduce installation time, dramatically enhance curb appeal and extend the life of your building's exterior. Transform your building facade into a striking, architectural masterpiece.

- ➔ **Non-Combustible**
- ➔ **UV / Fade Resistant**
- ➔ **Hail / Impact Resistant**
- ➔ **Anti-Corrosive**
- ➔ **Wind Load Tested**
- ➔ **WUI Compliant**

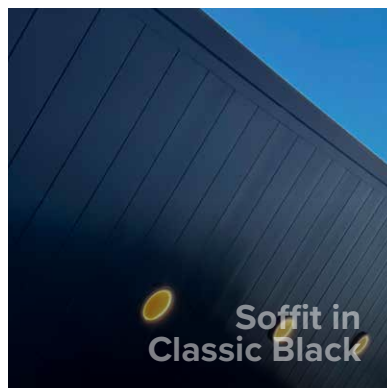




## Perfect for Accents and Soffits

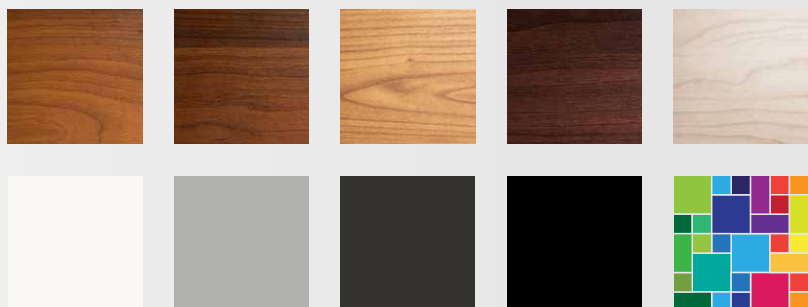
FastPlank V-Notch™ is the ideal choice for adding striking accents and seamless soffits to any building exterior. Designed for versatility, FastPlank V-Notch can be installed horizontally, vertically, or diagonally, giving you endless design possibilities.

Whether you're highlighting key architectural features or creating sleek, functional soffits, FastPlank V-Notch delivers style and durability.



## Multiple Patterns, Colors and Sizes to Choose from

Full selection of color options available on our website.



Visit our website to engage with a representative or to find out more about our Clip & Slide™ expansion system:



+1 877 973 8746  
info@engagebp.com  
[engagebp.com/fastplank](https://engagebp.com/fastplank)

**ENGAGE**  
BUILDING PRODUCTS™

Powder Perfect  
Exteriors



**QuickPanel®**  
Systems

# QUICK MAKEOVER

Complete ACM Panel System



QuickPanel® Systems is a versatile ACM panel system redefining building aesthetics and performance standards. QuickPanel® features patented innovations, like an integrated pressure-equalized rain screen, ensuring exceptional drainage, air circulation, and ventilation.

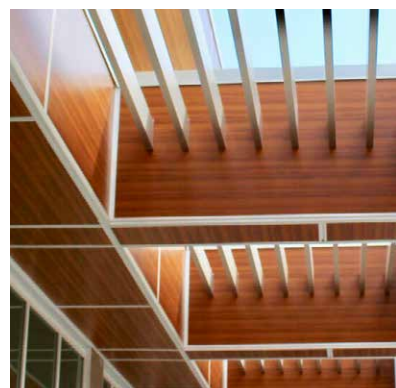
- ➔ Wind Load Tested
- ➔ Fire Rated Panels
- ➔ Water Management
- ➔ UV / Fade Resistant
- ➔ No Face Fasteners
- ➔ Warranties





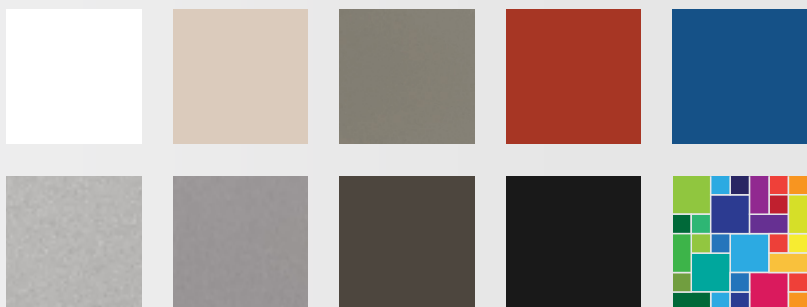
## The System You Love Just Got Better

Discover the new QuickPanel® 2.0 system, designed with smaller tabs and deeper reveals to achieve a classic route and return aesthetic. This enhancement provides a sophisticated and timeless look, perfect for projects seeking a traditional appeal. Despite these premium features, QuickPanel® 2.0 remains cost-effective, delivering high-end style and performance at a more affordable price point. Experience the perfect blend of elegance and value with QuickPanel® 2.0.



## Multiple Colors and Finishes to Choose from

Full selection of color options available on our website.



Visit our website to engage with a representative or to find out more about our new QuickPanel® 2.0 system:



+1 877 973 8746  
info@engagebp.com  
[engagebp.com/quickpanel](https://engagebp.com/quickpanel)

**ENGAGE**  
BUILDING PRODUCTS™

Powder Perfect  
Exteriors